



HR1057 / HR1059



HR1145



600168

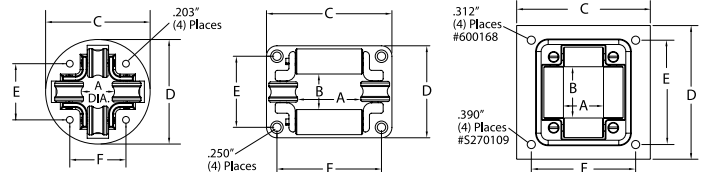


S270109

### Roller Hose Guide Assemblies

Model	Accommodates		Weight		Dimensions											
	Hose O.D.		lbs	kg	A		B		C		D		E		F	
	in (mm)				in	mm	in	mm	in	mm	in	mm	in	mm	in	mm
HR1057	.603 (16) - .906 (23)		.25	.12	0.875	22.3	N/A		3.125	79.4	3.125	79.4	1.6875	42.9	1.6875	42.9
HR1059	.250 (6.4) - .625 (15.9)		.25	.12	0.625	15.9	N/A		3.125	79.4	3.125	79.4	1.6875	42.9	1.6875	42.9
HR1145	.603 (16) - .906 (23)		.34	.15	2	50.8	1	25.4	3.75	95.3	2.75	69.9	2.125	54.1	3.125	79.4
S270109	.900 (23) - 2.00 (50.8)		5.39	2.44	5.25	133.4	2.375	60.4	12	305	8	204	5	127	10.5	267
600168	.900 (23) - 1.38 (35)		1.75	.34	1.5	38.1	2	50.8	5.125	130	5.125	130	4	102	4	102

These four-way roller guide assemblies are for use with reels on cabinet door openings and for similar locations where sharp edges may cut or damage the hose. The four-way design permits pulling or retracting hose at any angle. Model S270109 has nylon rollers mounted on an 11 gauge steel frame with pre-drilled mounting holes.



**Note:** A hose bumper should be used with the four-way roller hose guide assemblies to prevent damage to rollers and nozzles.

### Pivot Bases Not intended for mobile applications.



S600608



600801



600801-12

Part #	Description	For Reel Series	Color
S600608	340° Reel pivot base	RT / 3000 / 4000 / 5000 / 5005 / 7000 / HD70000	Black
600801	340° Reel pivot base	80000 / D80000 / 30006	Black
600801-12	340° Reel pivot base	30012	Black

### Roller Guide Assemblies



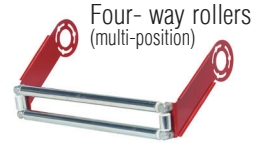
Bottom Wind



Side Wind



Three-way rollers

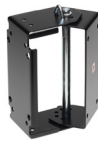


Four-way rollers (multi-position)

### Wall-Mounted Universal Swing Brackets



600626



600992

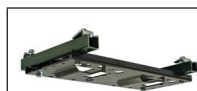


600993



600980

Part #	Description	For Reel Series	Color
600626	Swing bracket	RT / 4000 / 5000 / 5005 / 7000 / HD70000	Black
600992	Swing bracket	RT	Black
600993	Swing bracket	4000 / 5000	Red
600980	Swing bracket	80000 / D80000 / DP5000 / DP7000	Black



600295



600230

#### Top Mounting Channels and Beam Clamps

600370 - Top channel and beam clamps - for one reel  
 600295 - Top channel and beam clamps - for two reels  
 For mounting Series 7000 reels to an I-beam or overhead support. Mounting channels can be mounted end to end to mount three or more reels. To permit the mounting of Reelcraft Series RT, 4000, 5000, 5005, and electric cord reels on mounting channel, an adaptor assembly must be used (#600230).

#### 600230 Adaptor Assembly

Used with top channels and beam clamps only.

Hose Reel Spool Size	Bottom Wind Roller bracket assembly model number		Side Wind Roller bracket assembly model number			
	in	mm				
<b>Series 20000 - Four Way Rollers</b>						
12	305	S602973-12	S602974-12			
18	457	S602973-18	S602974-18			
22	559	S602973-22	S602974-22			
<b>Series 20000 - Four Way Rollers Unfinished</b>						
12	305	S602973-12 310	S602974-12 310			
18	457	S602973-18 310	S602974-18 310			
22	559	S602973-22 310	S602974-22 310			
Hose Reel Spool Size	Bottom Wind Roller bracket assembly model number		Top Wind Roller bracket assembly model number		Multi Position Roller bracket assembly model number	
	in	mm				
<b>Series 30000 - Four Way Rollers</b>						
6	152	S600693-1	S600692-1	S600533-1		
12	305	S600693-2	S600692-2	S600533-2		
18	457	S600693-3	S600692-3	S600533-3		
<b>Series 30000 - Three Way Rollers</b>						
6	152	S602132-1	S602133-1			
12	305	S602132-2	S602133-2			
18	457	S602132-3	S602133-3			

Bottom wind and top wind may be used with all models except bevel crank. Multi position may not be used on models with a chain guard or Series 37000 reels.